

# The Peabody Building

39-45 Newbury Street, BOSTON MA

The Peabody Building is located in the heart of Boston's Back Bay, on the prestigious first block of Newbury Street, steps to the Public Garden and all the restaurants & shops of Newbury & Boylston Streets. The Building's office & retail suites feature beautiful architectural details, high ceilings and lovely views. Ground-floor retail spaces are graced by Valentino, Loro Piana, and Shreve Crump & Low. Neighboring retail includes Brooks Brothers, Armani, Cartier, and many more. Managed by an Accredited Management Organization, AMO®.



Highly rated by Walk Score, as a "Walker's Paradise," "Rider's Paradise," and "Very Bikeable."

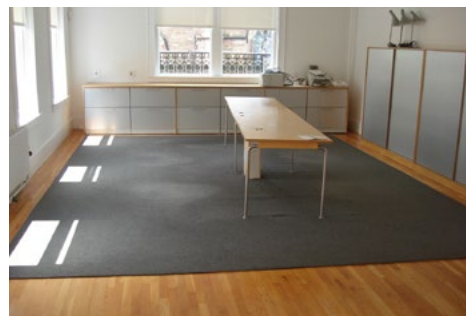
WALK SCORE: 98    TRANSIT SCORE: 100

## Features & Amenities

High Ceilings | Lots of Sunlight | Lovely Views | Onsite Day Porter | 24/7 Secure Access | Beautiful Architectural Details | 24/7 Professional Property Management | Individual Climate Control | Meeting Space | Openable Windows  
Custom Build-outs | Covid-19 Social Distancing Plans | Certified Cleaning & Sanitizing | Custom Cleaning Options



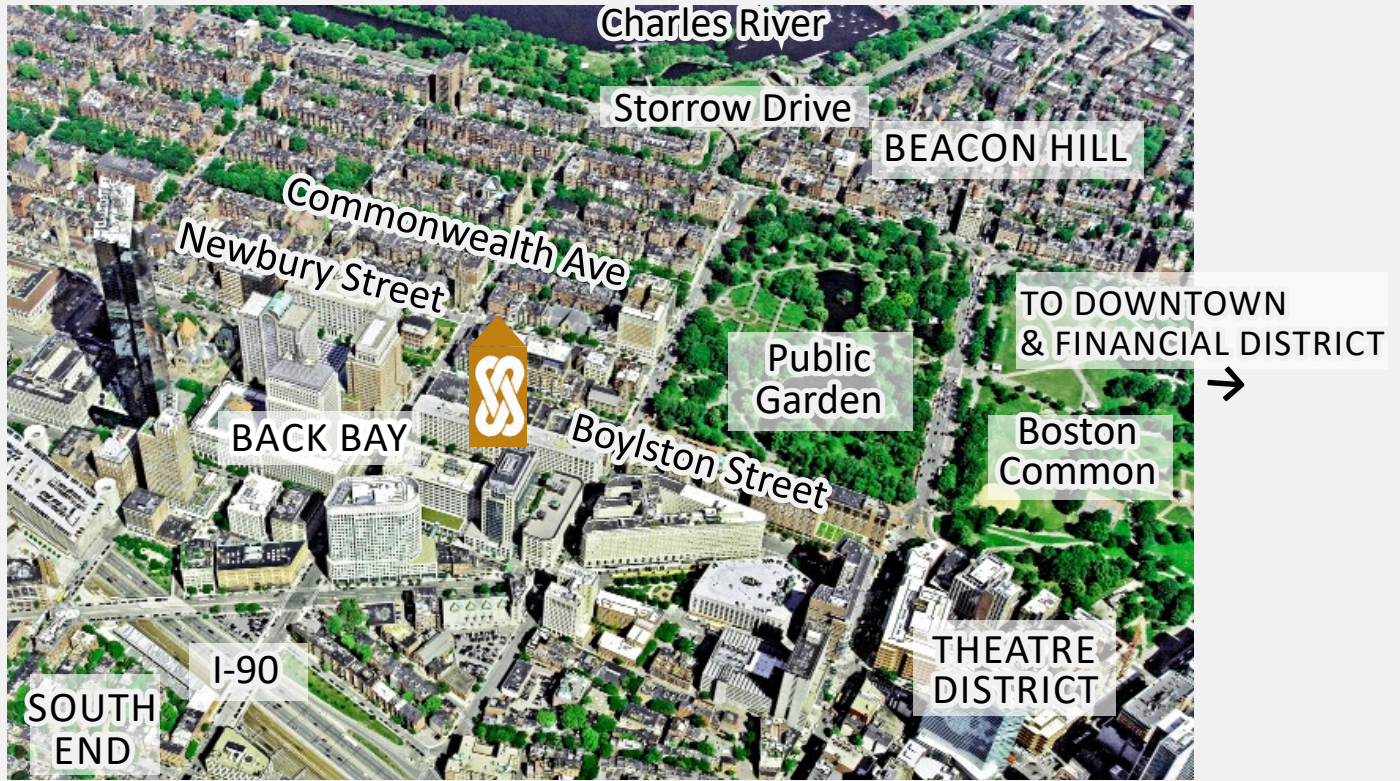
OFFICE & RETAIL SUITES • FIRST BLOCK of NEWBURY STREET



# Located in the Center of It All

20 PARK PLAZA, BOSTON MA

An ideal neighborhood, Boston's Back Bay abounds with office towers, luxury hotels, shops and restaurants. The Peabody Building is located on the renowned first block of Newbury Street, in the heart the Back Bay, a short walk to Boston Public Garden, Newbury and Boylston Streets. Convenient access to Downtown, Court-houses, Financial District, Seaport, Logan Airport, South Station, MBTA Green and Orange Lines, commuter rail, major highways, all of Boston and beyond.



## Neighboring Retail & Restaurants Include

